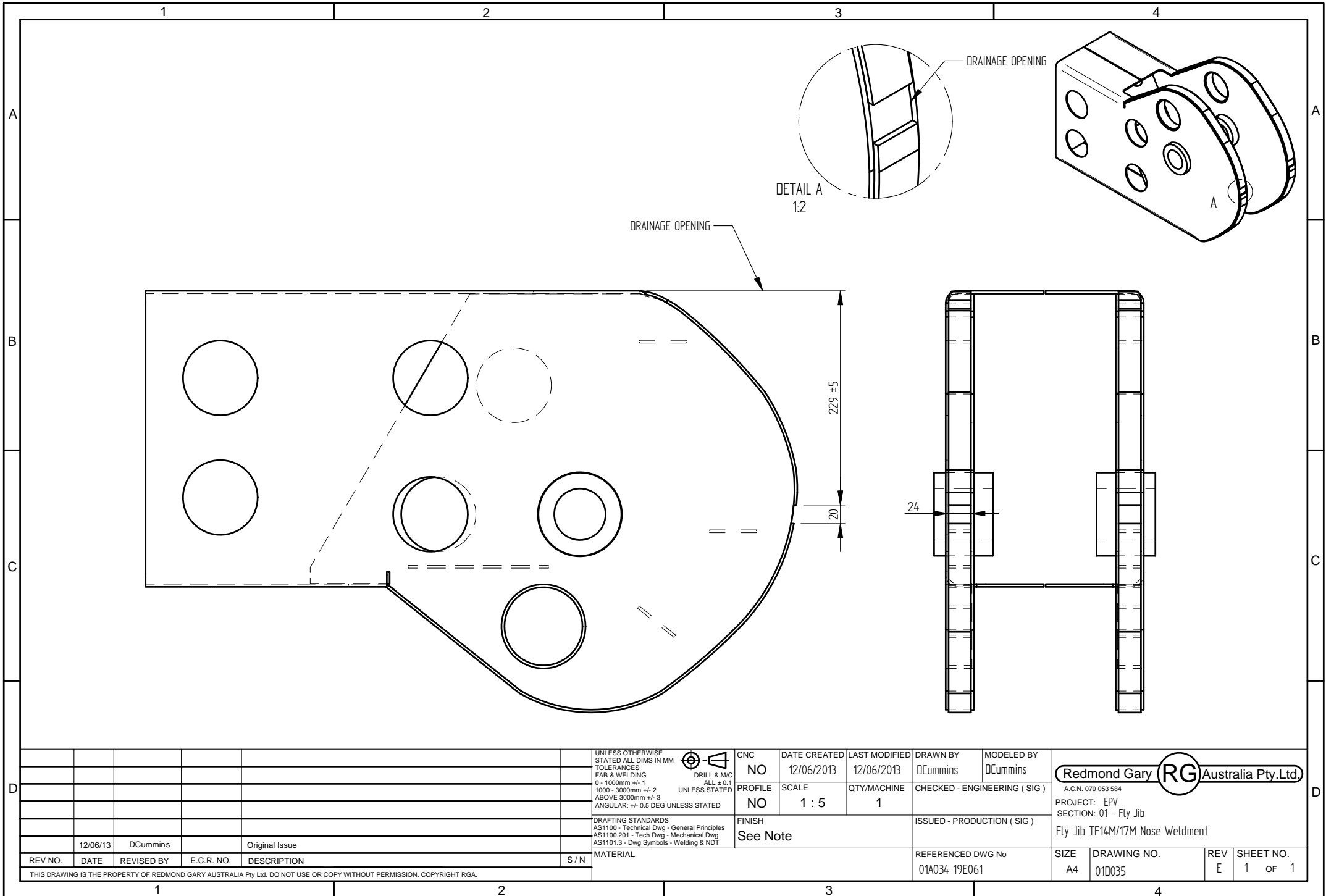


20th June, 2013

PROCEDURE FOR DRILLING DRAIN HOLES IN THE FLY BOOM

1. Refer to Drawing No. 01D035 below. This drawing shows the steel section embedded into the basket end of the fly jib.
2. Pivot the boom and basket to a position where the side of the hole can be accessed with a pistol drill.
3. Use this drawing, mark the end of the fly jib central on both sides.
4. The hole should be drilled pretty much in line with the basket pivot pin.
5. Mark the point where the hole is to be drilled.
6. Use a centre punch to dimple before drilling
7. Drill a 10mm hole in both sides of the fly jib end where indicated as an aperture in the steel structure on the drawing (Detail A).
8. Clean the hole and seal the fibreglass with Gelcoat.



UNLESS OTHERWISE STATED ALL DIMS IN MM
 TOLERANCES
 FAB & WELDING
 0 - 1000mm +/- 1
 1000 - 3000mm +/- 2
 ABOVE 3000mm +/- 3
 ANGULAR: +/- 0.5 DEG UNLESS STATED

DRILL & M/C
 ALL ± 0.1
 UNLESS STATED

DRAFTING STANDARDS
 AS1100 - Technical Dwg - General Principles
 AS1100.201 - Tech Dwg - Mechanical Dwg
 AS1101.3 - Dwg Symbols - Welding & NDT

MATERIAL

CNC	DATE CREATED	LAST MODIFIED	DRAWN BY	MODELED BY
NO	12/06/2013	12/06/2013	DCummins	DCummins
PROFILE	SCALE	QTY/MACHINE	CHECKED - ENGINEERING (SIG)	
NO	1 : 5	1		
FINISH			ISSUED - PRODUCTION (SIG)	
See Note				

Redmond Gary **RG** Australia Pty.Ltd.
 A.C.N. 070 053 584
 PROJECT: EPV
 SECTION: 01 - Fly Jib
 Fly Jib TF14M/17M Nose Weldment

REV NO.	DATE	REVISED BY	E.C.R. NO.	DESCRIPTION	S / N
	12/06/13	DCummins		Original Issue	

REFERENCED DWG No	SIZE	DRAWING NO.	REV	SHEET NO.
01A034 19E061	A4	01D035	E	1 OF 1