

SERVICE BULLETIN

Rev. No.	Date	Author	Description
	2-03-2016	G. Cheetham	Original Issue
1	20-06-2016	G. Cheetham	Scope Altered
2	15-09-2016	C. Rowley	Part Kit Created

MACHINE OR VEHICLE AFFECTED: TF Model MEWPs on Isuzu vehicles fitted with PM15 modules.

SERIAL NOS: Within the range 1438 to 1586 inclusive (EN280 compliant)

RISK IDENTIFIED: Stop/start switch activating automatically

DESCRIPTION: Moisture can cause the stop/start switch at the rear of the vehicle to activate automatically.

REPAIR PROCEDURE

Refer to procedure below:

Parts Required:

Part Number:	Description	QTY
77-STOPSTARTKIT	STOP/ START UPGRADE KIT	1

Engine Start/Stop Modification Procedure

- Step 1:** Ensure the MEWP is turned OFF and the battery isolator is switched OFF.
- Step 2:** Open the main electrical enclosure, located on the deck of the MEWP.
- Step 3:** Unmount the 3 relays and holders, and position them further left to allow room to fit an extra relay on the side – See Figure 1.

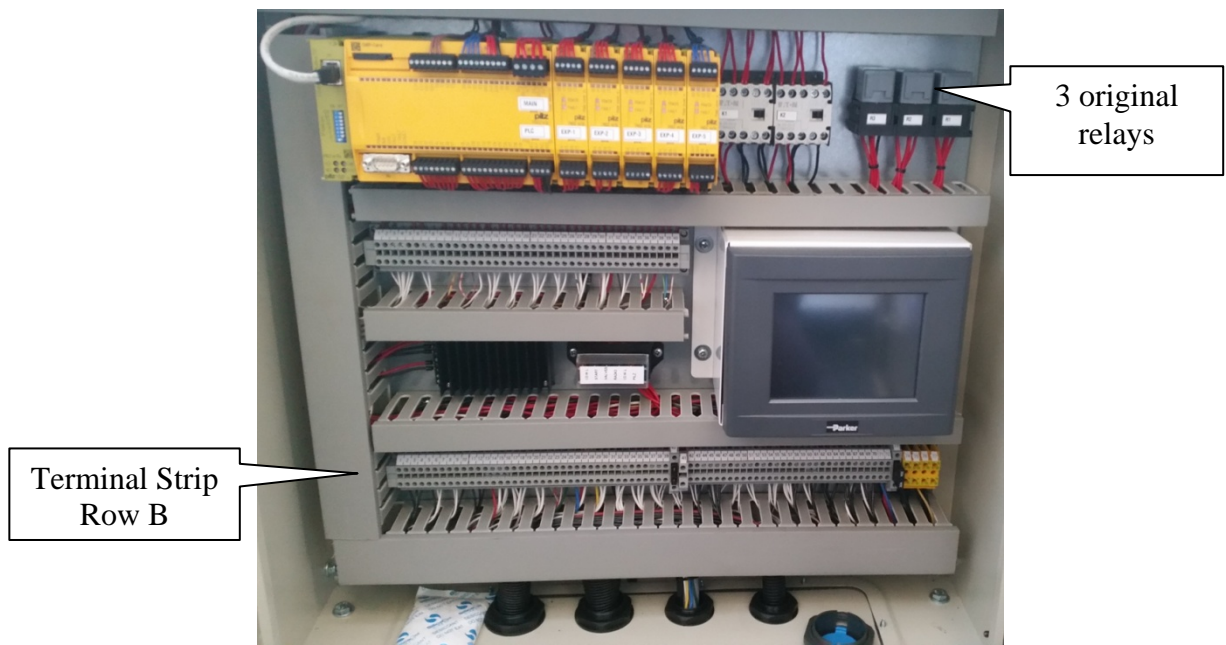


Figure 1: Inside main electrical enclosure

Step 4: Remount the 3 original relays and the addition relay required for the modification.

Step 5: Remove the black wire no. 9 from Row B Terminal 66 – see Figure 2.

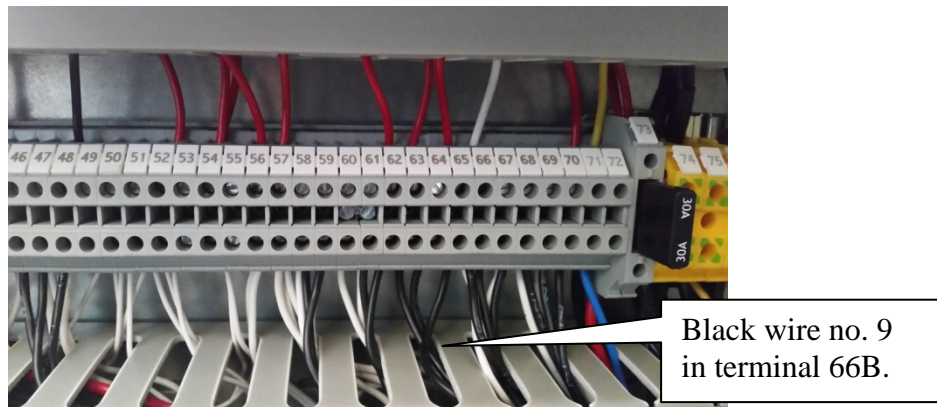


Figure 2: Terminal Strip Row B

Step 6: To wire additional relay:

- a. Extend and run the black wire no. 9 to relay terminal 30.
- b. Run a wire from terminal strip 66B to relay terminal 85.
- c. Connect relay terminal 87 to terminal strip 56B.
- d. Run a wire from relay terminal 86 to ground terminals (yellow) 74B-77B.
- e. Bridge relay terminals 86 and 87A together with a short length of wire.

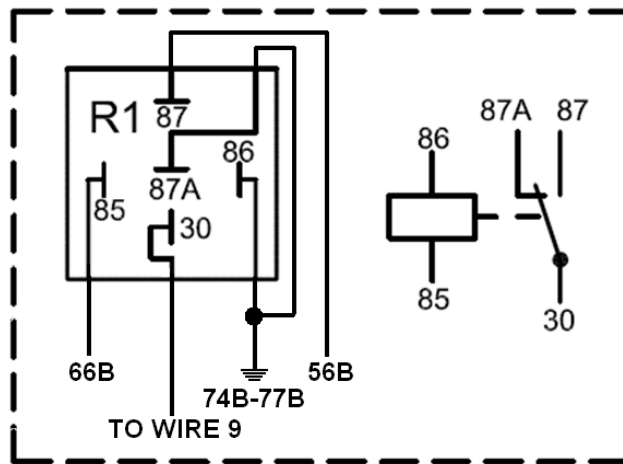
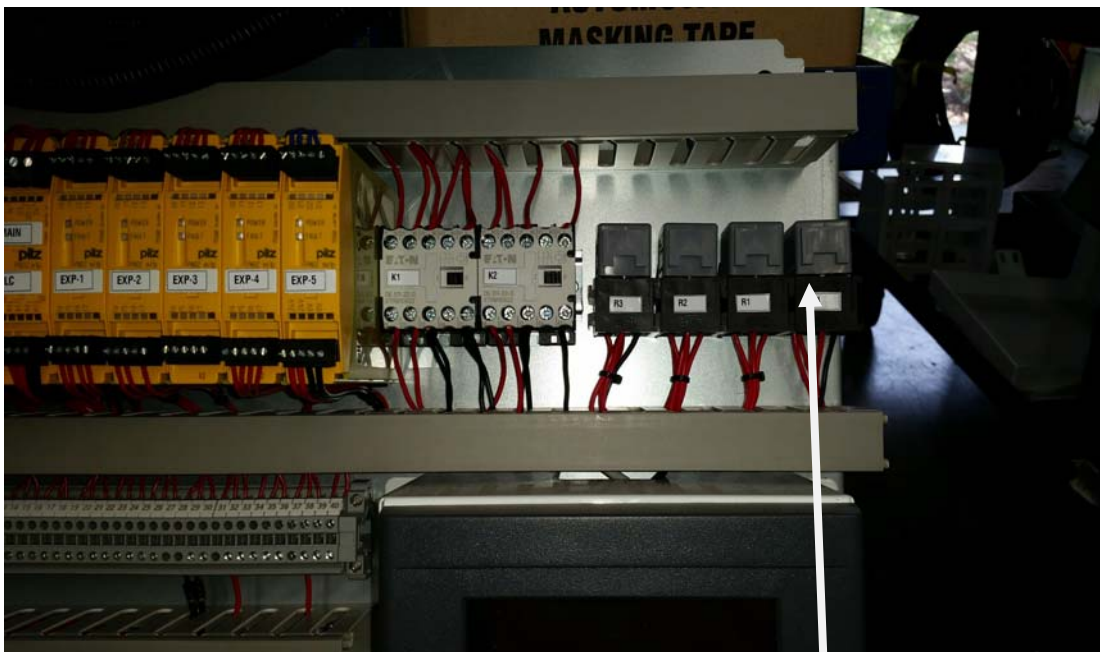


Figure 3: Diagram of automotive relay

- Step 7:** Once everything has been fitted and connected close the main electrical enclosure, turn ON the battery isolator switch, start the truck up as normal and engage the PTO.
- Step 8:** Test the engine start/stop button at the rear of the truck still stops the engine and then starts the engine when pressed again.
- Step 9:** Wet the tip of your finger and bridge the contacts behind the start/stop switch. Test that this does not start/stop the truck engine.



New Stop/Start Relay R4

CUSTOMER ACTION REQUIRED:

MEWP owners must circulate this bulletin to all their maintenance personnel.

RG ACTION REQUIRED:

A typical electrical circuit diagram with the modification shown will be sent with this service bulletin.

Please contact Grant Cheetham, our Service & Spare Parts Manager, on (07) 5594 9844 or Mobile 0438 748 363, if further information is required.

.....
Grant Cheetham
Service & Spare Parts Manager