



**FIBRE REINFORCED DUNNAGE**



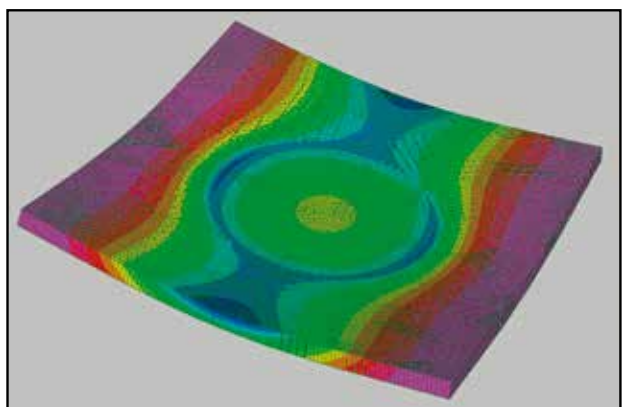
550 x 550 x 16mm



Dunnage supporting full test load of the truck over free span

Dunnage can be supplied in a range of sizes to meet customer requirements. Industry standard sizes are 550 x 550 mm and 300 x 300 mm and can be supplied in a range of colours. Dunnage has been designed to have uniform stiffness and the ability to spread the load evenly across the surface of the ground with improved characteristics in comparison with plastic dunnage. RG dunnage has many advantages over wooden dunnage:

- Lightweight
- Cost effective
- Heavy duty
- Has a soft carry handle
- Will not splinter
- Will not rot
- Available in bright colours so less likely to be lost
- Dunnage has rough surface with high coefficient of friction
- Company logo can be printed into the top surface
- Stiffer
- Spreads the load evenly across surfaces
- Lighter and thinner to handle the same load
- Can be used to span voids (Consult RG prior to determine suitability)



Stress plot of 22mm thick dunnage at a load of 464kN (47.2 Tonne). The plate flexure stress is 228MPa and the laminate fails at 400MPa

Type	RG Dunnage 300 x 300 x 12 mm	RG Dunnage 550 x 550 x 16 mm	RG Dunnage 550 x 550 x 22 mm
Weight	2.5 kg	9.8 kg	13.5 kg
Thickness	12 mm	16 mm	22 mm
Capacity (WLL)	6 tonnes	11 tonnes	22 tonnes