

SERVICE BULLETIN

Rev. No.	Date	Author	Description
Original issue	5 December, 2017	Andrew Danks	TF Basket upgrade

MACHINE OR VEHICLE AFFECTED:

TF Model MEWPs with TL basket retro-fit.

RISK IDENTIFIED:

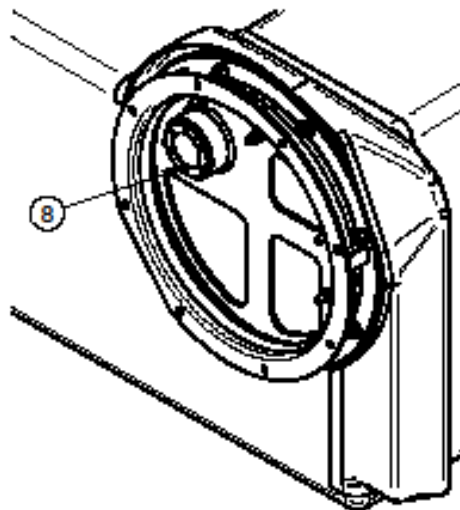
Weld joint failure.

DESCRIPTION:

Rotating basket cylinder anchor point weld failure.

INSPECTION REQUIREMENT DURING 3 MONTHLY INSPECTION:

- Raise boom to access underside of the basket.
- Remove under-basket cover and inspect Item 8 – check that it is secure. If it is loose or out of square with the base plate, it will need to be repaired.



CUSTOMER ACTION REQUIRED:

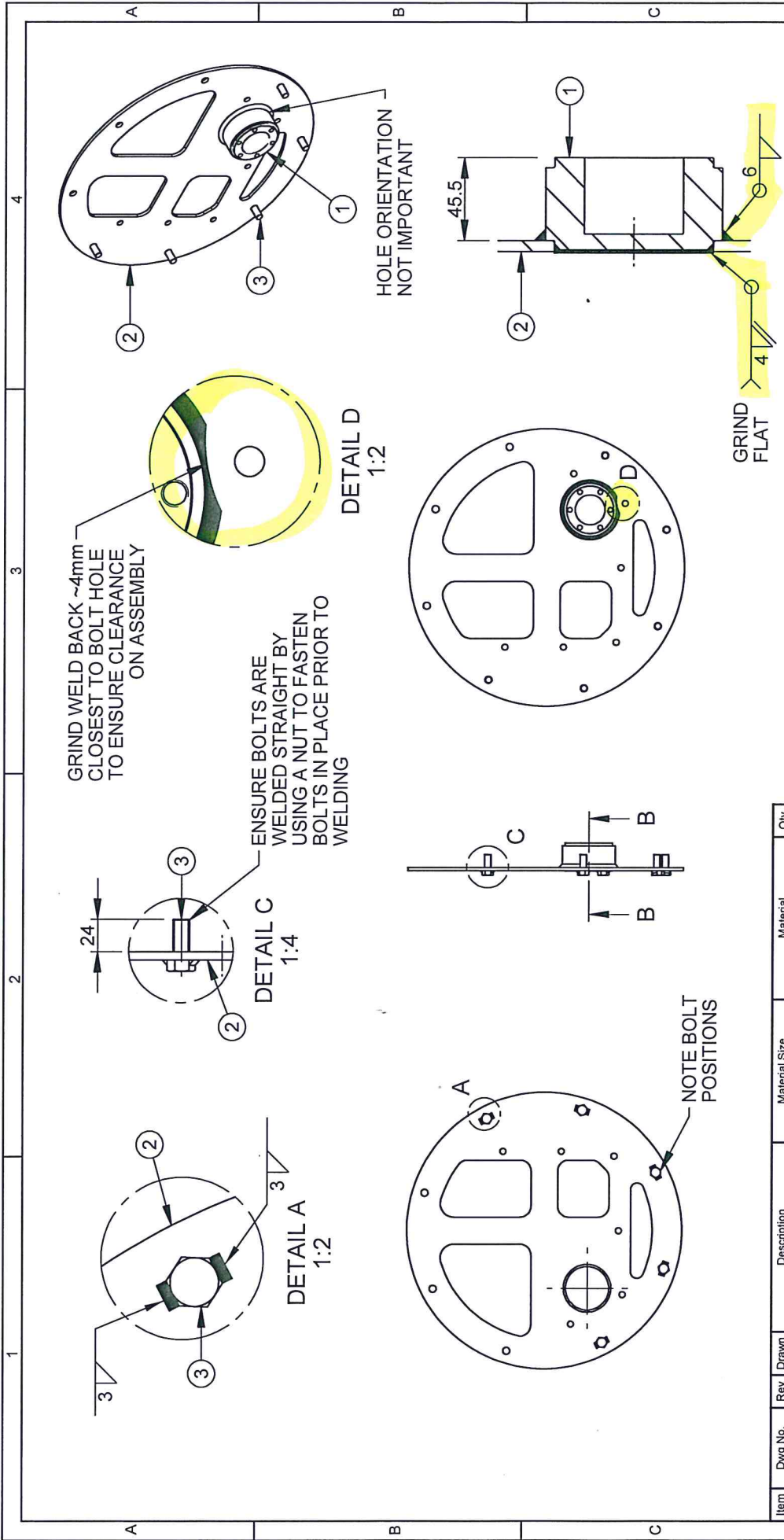
MEWP owners must circulate this bulletin to all their maintenance personnel.

RG ACTION REQUIRED:

A detailed repair procedure is available from Redmond Gary Australia, on request.

Please contact Peter Danks, our Service & Spare Parts Supervisor, on (07) 5594 9844, if further information is required.

Andrew Danks
Managing Director



Item	Dwg No.	Rev	Drawn	Description	Material Size	Material	Qty
1	07A145#1			Cylinder Pin Boss TL Basket	Round Bar 100 mm	Steel AS 1442-1045	1
2	07A384	A		Bearing Mounting Plate	Plate 6 mm	Steel AS 3678-350	1
3	N/A		No	Hex Hd Bolt M12 x 30		Class 10.9 Zinc Plated	5

REV NO.	DATE	REVISOR	E.C.R. NO.	DESCRIPTION
A	09/11/17	MDanks		Added 6mm weld to boss, new side view and note to grind weld
1	09/09/16	MDanks		Revised 07A384, 5x M12 bolts were M10. Increased bolt size to suit Ø14 holes in TF slaw bearing (07A141), added note for hole orientation, leworded note for fastening bolts
	07/08/16	DCurmins		Original Issue

EDGES	DATE CREATED	LAST MODIFIED	DRAWN BY	MODELED BY
UNLESS OTHERWISE STATED ALL DIMS IN MM	09/11/2017	09/11/2017	MDanks	MDanks
TOLERANCES				
DRILL & M.S.				
ALL ± 0.1				
SIZE				
UNLESS STATED				
0 - 1000mm ± 0.2				
1000 - 3000mm ± 0.3				
3000mm - 10000mm ± 0.5				
ANGULAR ± 0.5 DEG UNLESS STATED				
DRAFTING STANDARDS				
AS 1000 - Technical Dwg - General Principles				
AS 1001 - First Ang. Proj. - Mechanical Dwg				
AS 1002 - Symbols - Mechanical Dwg				
MATERIAL				
1626				
1245				
1595				
S/T/N				

© THIS DRAWING IS THE PROPERTY OF REDMOND GARY AUSTRALIA Pty.Ltd. DO NOT USE OR COPY WITHOUT PERMISSION. COPYRIGHT RGA

Redmond Gary (RGA) Australia Pty.Ltd.
A.C.N. 070603384
PROJECT: EWP
SECTION: 07 - Basket
Bearing Mount Weldment
CHECKED - ENGINEERING (S/G)
10/11/17
REFERENCED DWG No
07A382
DRAWING NO.
07A383
REV / SHEET NO.
A 1 OF 1