

TL MEWP Data Log Download Procedure

Doc. No: AFS.6.0002

Rev No.:	Date:	Author:	Description:
1	01/04/2025	William Ward	Original issue

Applicable Machines	Redmond Gary Australia TL MEWP's
Criticality	Recommended to be performed at each 3-monthly (A1) & 12-monthly (B) inspection
Issue Date	1 April 2025
Overview	The purpose of this document is to instruct operators or service personnel on how to download the data log off the HMI on a TL MEWP.

Ensure all of this work is carried out in a safe working environment. All work is to be carried out by a competent tradesperson.

Parts & Equipment Required	<ul style="list-style-type: none"> • Empty USB Flash Drive • Computer
---------------------------------------	---

Please read and understand the following instructions prior to starting work.

1. PROCEDURE

1. Ensure the battery isolation switch is turned on
2. Turn on the ignition key switch, wait for the HMI to connect and then turn on the PTO
3. Select the Service Tools Icon by pressing the physical button adjacent to the screen or touching the icon on the screen itself.



Figure 1: HMI – Main Page. Service Tools Icon highlighted yellow.

4. Select the USB Icon to bring up the Data Log Transfer page

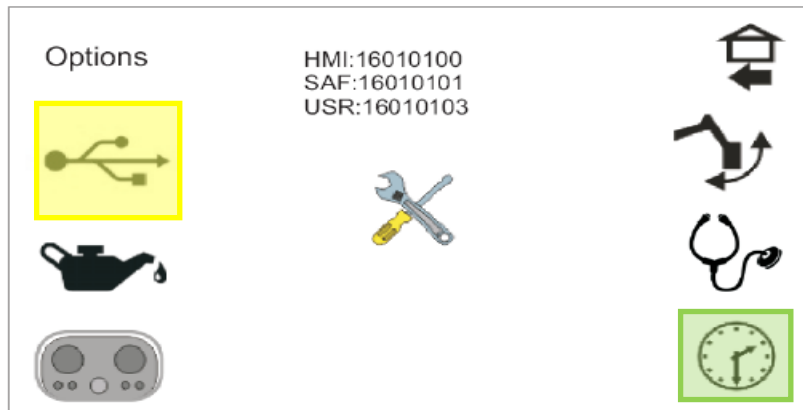


Figure 2: HMI – Service Tools Page. USB Icon highlighted yellow. Clock Icon highlighted green.

5. Insert a USB flash drive into the USB receptacle on the HMI (bottom right on front face). After USB drive has been initialised, the USB icon on the top-left of the screen will change from a USB icon with a red cross to a green USB icon.



Figure 3: HMI – USB receptacle highlight yellow.

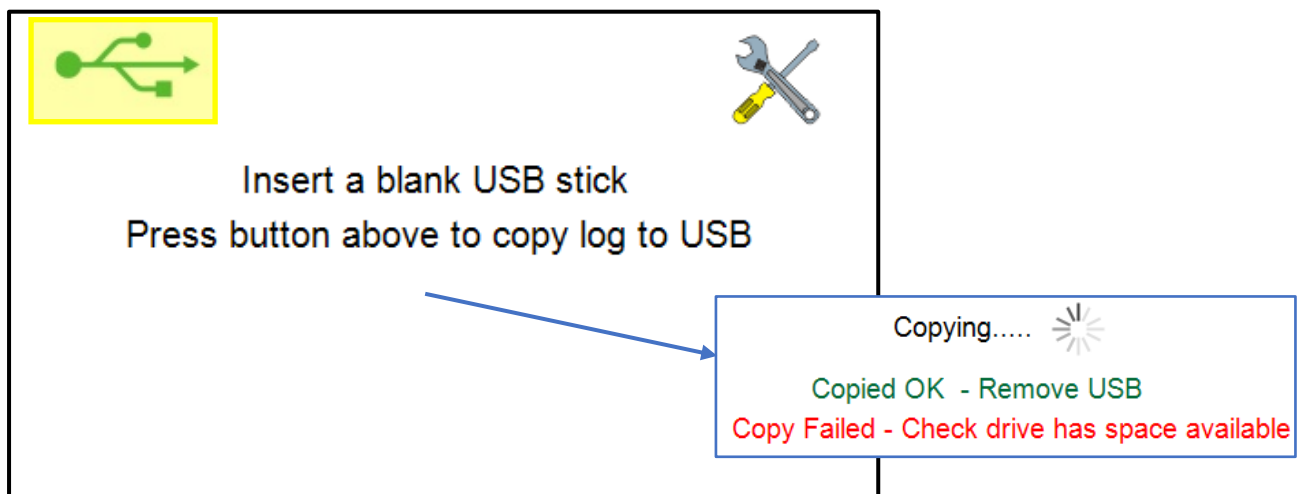


Figure 4: HMI – USB Data Log Download Page. Green USB icon highlighted yellow.

6. Press the green USB icon to begin data transfer. When transfer is complete, remove the USB drive when prompted. The data log files will be called "latest.csv" and "older.csv".
Note: (1) The HMI might say copy failed after the download. Use a computer to double-check if the log files were copied.
(2) The data log transfer will overwrite any existing logs stored on the USB from MEWPs.
7. Email these data log files to Redmond Gary Australia for analysis.
 - 7.1. If there is a specific fault or case that requires analysis, please include the real date and time when the incident occurred.
 - 7.2. If the date and time settings on the HMI differ from the real date and time, please also include in the email the following:
 - The real date and time when the data log was downloaded.
 - The date and time set on the HMI when the data log was downloaded. HMI date/time settings can be accessed with the Clock Icon from the Service Tools Page, see Figure 2.
8. If necessary, correctly set the date and time only after the steps 7, 7.1 and 7.2 are complete. Refer to the Operator's Manual for date/time settings.

Please contact Redmond Gary Australia, if you are unsure of any instructions.